



90.21

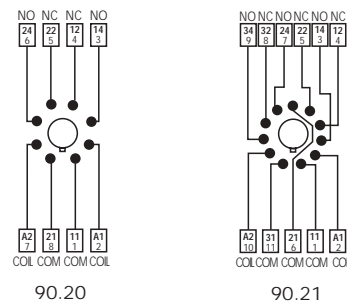
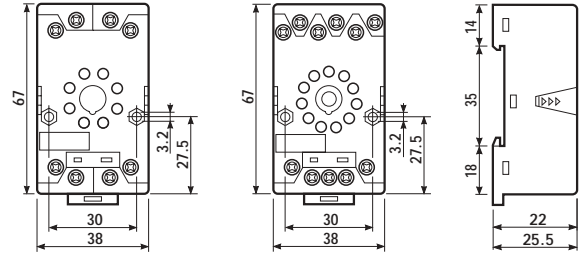
Approvals
(according to type):



- RATED VALUES: 10 A - 250 V
- DIELECTRIC STRENGTH: ≥ 2 kV AC
- PROTECTION CATEGORY: IP 20
- AMBIENT TEMPERATURE: (-40...+70)°C
- SCREW TORQUE: 0.5 Nm
- WIRE STRIP LENGTH: 10 mm
- MAX WIRE SIZE:

	solid wire	stranded wire
mm ²	1x6 / 2x2.5	1x6 / 2x2.5
AWG	1x10 / 2x14	1x10 / 2x14

Relay type	60.12		60.13	
	BLUE	BLACK	BLUE	BLACK
Clamp terminal socket: panel or 35 mm rail (EN 50022) mount retaining clip 090.33 supplied with socket packaging code SMA	90.20	90.20.0	90.21	90.21.0
Retaining clip	090.33			
Modules (see table below)	99.01			



60



99.01

99.01 modules for 90.20 and 90.21 sockets		BLUE
Diode** (+A1)	(6...220) V DC	99.01.3.000.00
Diode (inverted polarity)	(6...220) V DC	99.01.2.000.00
LED	(6...24) V DC/AC	99.01.0.024.59
LED	(28...60) V DC/AC	99.01.0.060.59
LED	(110...240) V DC/AC	99.01.0.230.59
LED + Diode** (+A1)	(6...24) V DC	99.01.9.024.99
LED + Diode** (+A1)	(28...60) V DC	99.01.9.060.99
LED + Diode** (+A1)	(110...220) V DC	99.01.9.220.99
LED + Diode (inverted polarity)	(6...24) V DC	99.01.0.024.79
LED + Diode (inverted polarity)	(28...60) V DC	99.01.9.060.79
LED + Diode (inverted polarity)	(110...220) V DC	99.01.9.220.79
LED + Varistor	(6...24) V DC/AC	99.01.0.024.98
LED + Varistor	(28...60) V DC/AC	99.01.0.060.98
LED + Varistor	(110...240) V DC/AC	99.01.0.230.98
RC	(6...24) V DC/AC	99.01.0.024.09
RC	(28...60) V DC/AC	99.01.0.060.09
RC	(110...240) V DC/AC	99.01.0.230.09
No - remanence (62 kΩ/1W)	(110...240) V AC	99.01.8.230.07

**For DC supply, apply the positive to terminal A1. Modules in Black housing are available on request. Green LED is standard. Red LED available on request.



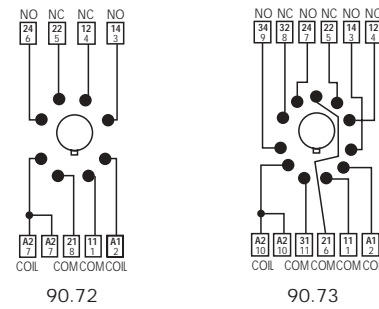
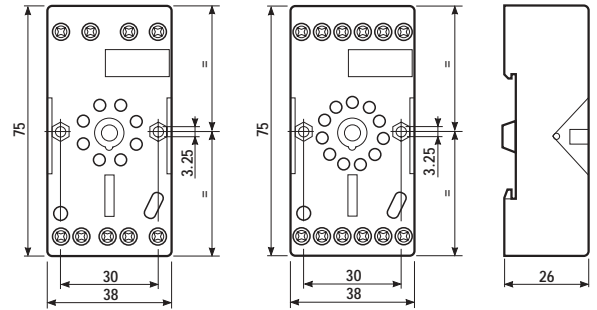
Relay type	60.12		60.13	
	BLUE	BLACK	BLUE	BLACK
Colour	BLUE	BLACK	BLUE	BLACK
Clamp terminal socket: panel or 35 mm rail (EN 50022) mount	90.72	90.72.0	90.73	90.73.0
Retaining clip	090.33			
Timer module	86.60			

Approvals
(according to type):



- Double ground terminal (A2).
- RATED VALUES: 10 A - 250 V
- DIELECTRIC STRENGTH: ≥ 2 kV AC
- PROTECTION CATEGORY: IP 20
- AMBIENT TEMPERATURE: (-40...+70)°C
- SCREW TORQUE: 0.8 Nm
- WIRE STRIP LENGTH: 7 mm
- MAX WIRE SIZE:

	solid wire	stranded wire
mm ²	1x6 / 2x4	1x6 / 2x4
AWG	1x10 / 2x12	1x10 / 2x12



60



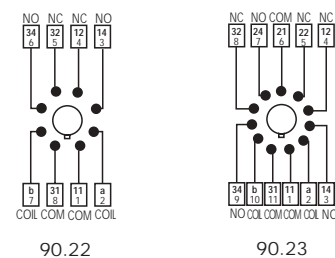
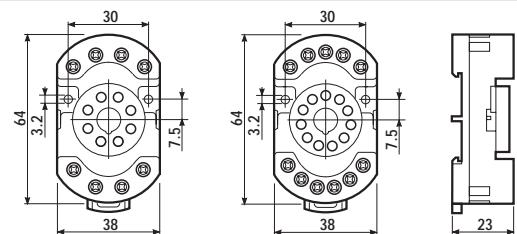
Relay type	60.12		60.13	
	BLUE	BLACK	BLUE	BLACK
Colour	BLUE	BLACK	BLUE	BLACK
Clamp terminal socket: panel or 35 mm rail (EN 50022) mount	90.22	90.22.0	90.23	90.23.0
retaining clip 090.33 supplied with socket packaging code SMA				
Retaining clip	090.33			

Approvals
(according to type):



- RATED VALUES: 10 A - 250 V
- DIELECTRIC STRENGTH: ≥ 2 kV AC
- PROTECTION CATEGORY: IP 20
- AMBIENT TEMPERATURE: (-40...+70)°C
- SCREW TORQUE: 0.5 Nm
- WIRE STRIP LENGTH: 7 mm
- MAX WIRE SIZE:

	solid wire	stranded wire
mm ²	1x6 / 2x2.5	1x6 / 2x2.5
AWG	1x10 / 2x14	1x10 / 2x14





90.26

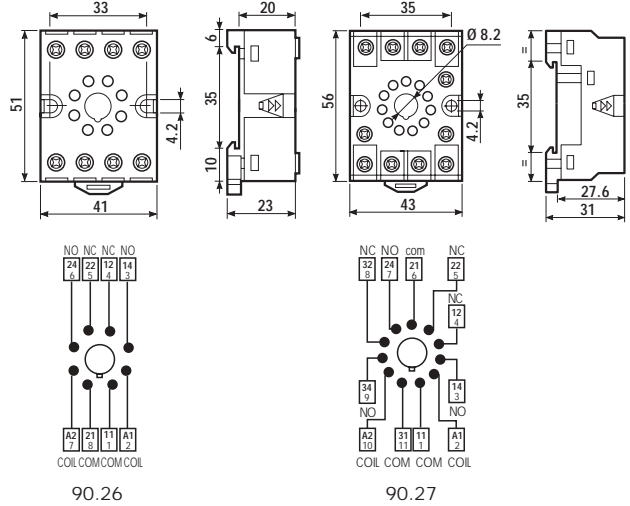
Relay type	60.12		60.13	
	Colour	BLUE	BLACK	BLUE
Screw terminal socket: panel or 35 mm rail (EN 50022) mount retaining clip O90.33 supplied with socket packaging code SMA	90.26	90.26.0	90.27	90.27.0
Retaining clip	O90.33			

Approvals
(according to type):



- RATED VALUES: 10 A - 250 V
- DIELECTRIC STRENGTH: ≥ 2 kV AC
- PROTECTION CATEGORY: IP 20
- AMBIENT TEMPERATURE: (-40...+70) $^{\circ}$ C
- SCREW TORQUE: 0.8 Nm
- WIRE STRIP LENGTH: 10 mm
- MAX WIRE SIZE:

	solid wire	stranded wire
mm ²	1x4 / 2x2.5	1x4 / 2x2.5
AWG	1x12 / 2x14	1x12 / 2x14



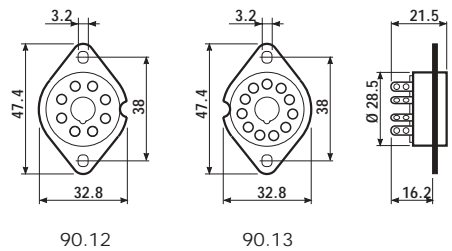
90.12

Relay type	60.12		60.13	
Colour	BLUE	BLACK	BLUE	BLACK
Flange mount solder socket mount with M3 screw	90.12	90.12.0	90.13	90.13.0

Approvals
(according to type):



- RATED VALUES: 10 A - 250 V
- DIELECTRIC STRENGTH: ≥ 2 kV AC
- AMBIENT TEMPERATURE: (-40...+70) $^{\circ}$ C



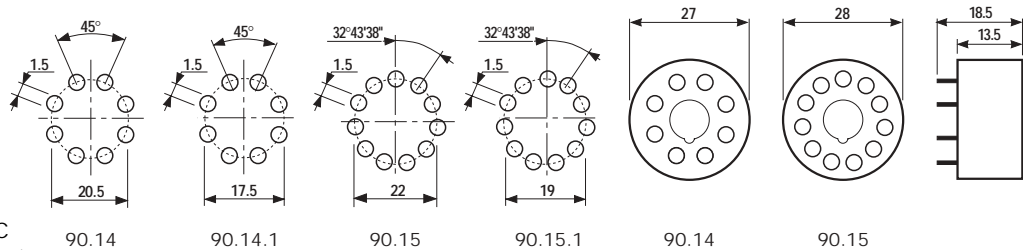
90.15

Relay type	60.12		60.13	
P.C.B. socket	BLUE	90.14	90.15	
	BLUE	90.14.1 (\varnothing 17.5mm)	90.15.1 (\varnothing 19mm)	

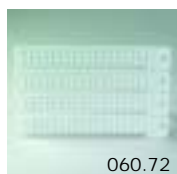
Approvals
(according to type):



- RATED VALUES: 10 A - 250 V
- DIELECTRIC STRENGTH: ≥ 2 kV AC
- AMBIENT TEMPERATURE: (-40...+70) $^{\circ}$ C



ACCESSORIES



060.72

Sheet of marker tags for relay types 60.12 and 60.13 (72 tags)	060.72
---	--------

PACKAGING CODES

How to code and identify retaining clip and packaging options for sockets.

Code options according to the last three letters:

