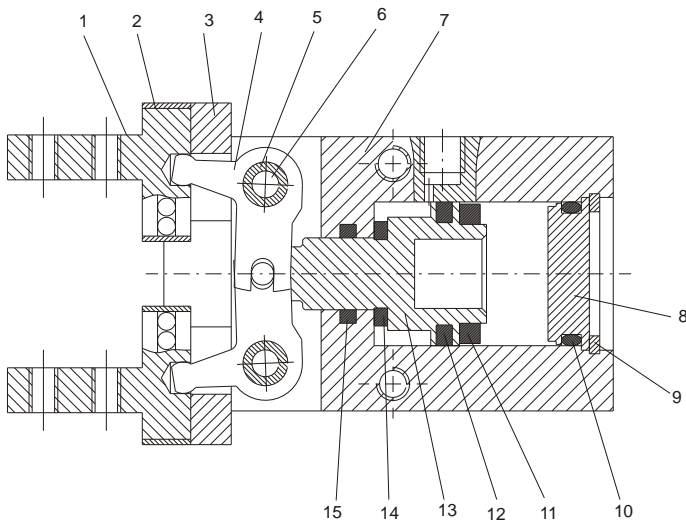
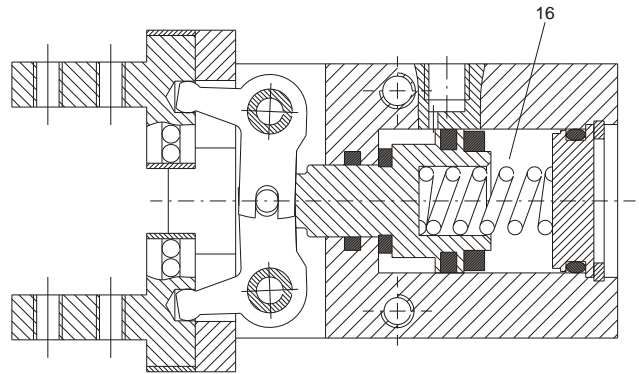
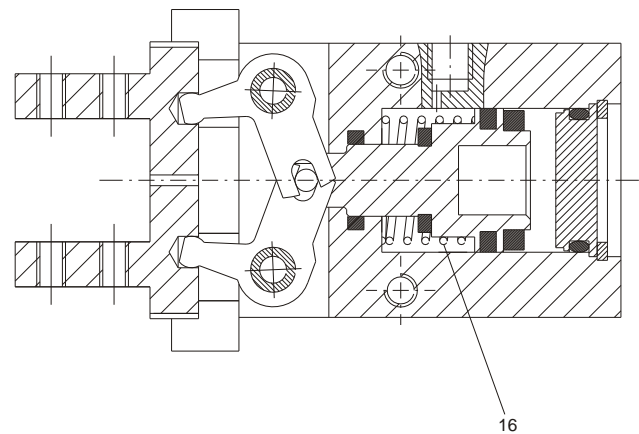


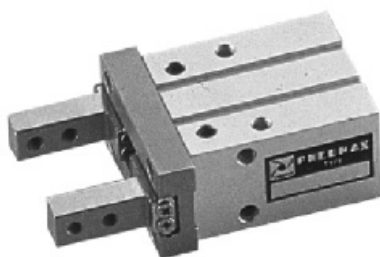
**Single acting version
N.O.**



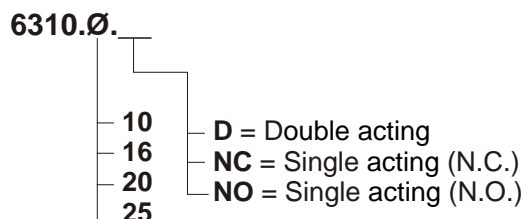
**Single acting version
N.C.**



Pos.	Item	Qty.	Pos.	Item	Qty.
1	Finger	2	10	End cover seal	1
2	Closing plate	4	11	Magnet	1
3	Guide	1	12	Piston seal	1
4	Lever	1	13	Piston	1
5	Bushing	2	14	Cushioning washer	1
6	Pin	2	15	Rod seal	1
7	Body	1	16	Spring	1
8	End cover	1			
9	Circlip	1			



Ordering code



Magnetic sensors : see page 3.38 e 3.39

Construction characteristics

Body	aluminium
Piston	aluminium or stainless steel (depending on the bore)
Fingers	steel
End cover	aluminium
Seals	oil resistant NBR rubber

Construction characteristics

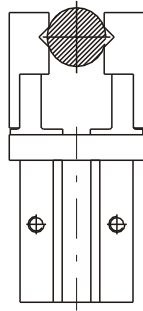
Fluid	filtered and non lubricated air
Working pressure	double acting : 2 ÷ 7 bar for $\varnothing 10$ - 1 ÷ 7 for other bores single acting : 3,5 ÷ 7 bar for $\varnothing 10$ - 2,5 ÷ 7 for other bores
Operating temperature	-5°C ÷ +70°C

Holding force per finger

Bore	Force (N)			
	e	i	e	i
$\varnothing 10$	9,8	17	6,3	12
$\varnothing 16$	30	40	24	31
$\varnothing 20$	42	66	28	56
$\varnothing 25$	65	104	45	83
	double acting		N.O.	N.C.
			single acting	

e = external holding force
i = internal holding force

EXTERNAL HOLD



INTERNAL HOLD

