

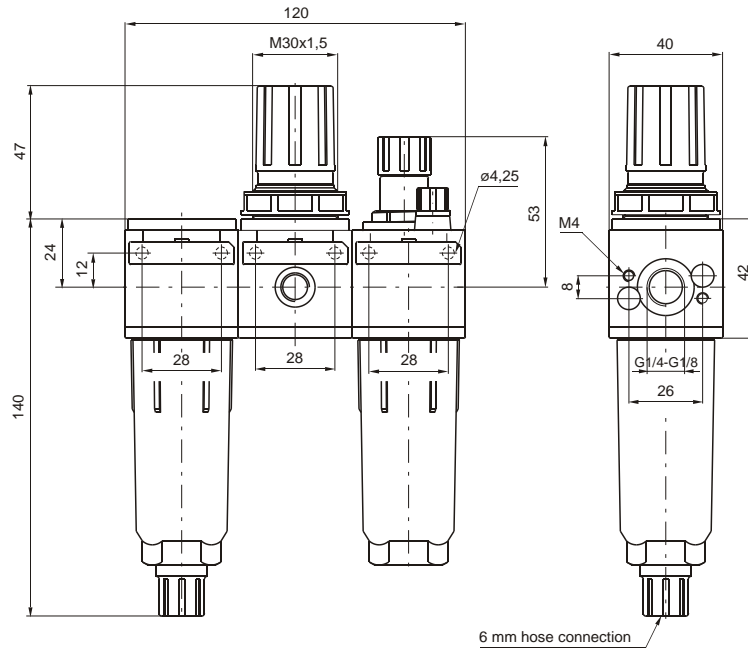


Construction and working characteristics

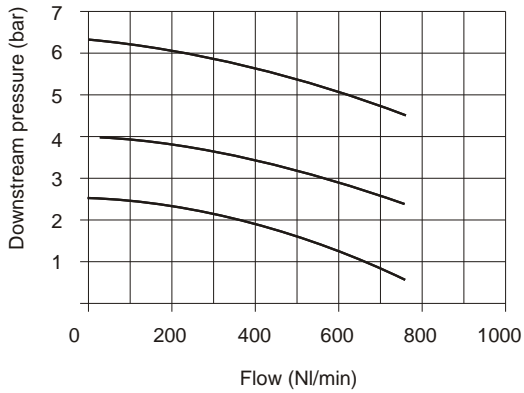
- Zinc alloy body or reinforced technopolymer body with threaded brass insert connections.
- Wall mounting possibility with M4 screws protected by covers.
- Transparent technopolymer bowls screwed to the body.
- Shock resistant bowl technopolymer protections.
- Double filtering action: by air centrifuging and by replaceable and reusable HDPE porous filter element.
- Manual and semi-automatic water drain valve; in the semi-automatic version the drainage happens when there is no pressure or by pushing the valve up-wards.
- Possibility to see the water level on 360° also with bowl protection assembled.
- Diaphragm pressure regulator with relieving and balanced poppet.
- Pressure adjusting lockable handle by simply pressing it downwards in the desired position.
- Two pressure gauge connections with plug complete of seal.
- Panel mounting bracket.
- Automatic water drainage bowl available on request.
- Fog type lubrication with variable section orifice according to the flow.
- Possibility to see the min. and max. oil level on 360° also with bowl protection assembled.
- Transparent technopolymer sight dome with adjusting handle.
- Oil filling plug.

Technical characteristics

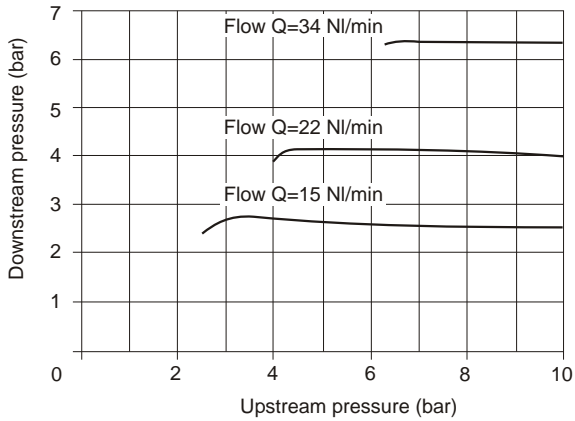
Connections	G 1/8" - G 1/4"
Max. inlet pressure	13 bar - 1,3 MPa
Max. ambient temperature (at 10 bar)	50°C
Pressure gauge connections	G 1/8"
Weight with technopolymer body	gr. 375
Weight with zinc alloy body	gr. 755
Pressure range	0 - 2 bar 0 - 4 bar 0 - 8 bar 0 - 12 bar
Filter pore size	5µ 20µ 50µ
Bowl capacity	17 cm ³
Indicative oil drip rate	1 drop every 300/600 NI
Oil type	FD22 - HG32
Bowl capacity	32 cm ³
Assembly position	Vertical
Wall mounting screws	M4
Max. fitting torque on zinc alloy body	30 Nm
Max. fitting torque on technopolymer body	15 Nm
Min. operational flow at 6.3 bar	10 NI/min



Flow rate curves
Inlet pressure (7 bar)

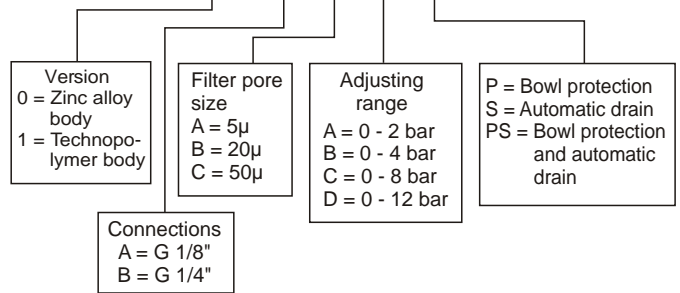


Adjustment characteristics



Ordering code

17 07



Example: **17107A.B.C.P**

Service unit combination complete with filter - pressure regulator and lubricator size 1 G 1/8" connections, filter pore size 20μ, adjusting range 0-8 bar and bowl protections with technopolymer body.