

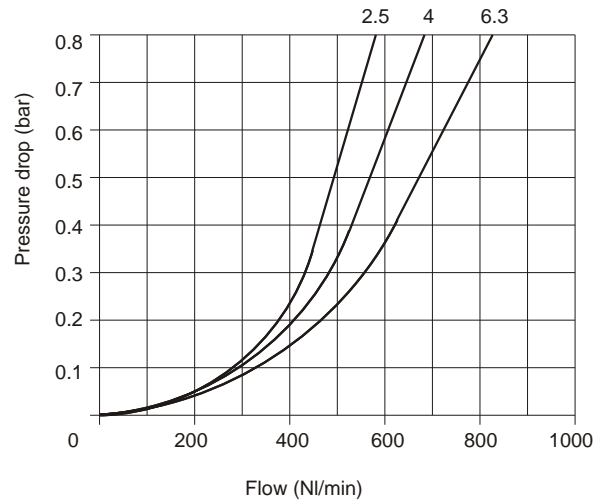
### Construction and working characteristics

- Double filtering action: by air centrifuging and by replaceable and reusable HDPE porous filter element.
- Zinc alloy body or reinforced technopolymer body with threaded brass insert connections.
- Wall mounting possibility with M4 screws protected by covers.
- Transparent technopolymer bowl screwed to the body.
- Shock resistant bowl technopolymer protection.
- Manual and semi-automatic water drain valve; in the semi-automatic version the drainage happens when there is no pressure or by pushing the valve up-wards.
- Possibility to see the water level on 360° also with bowl protection assembled.
- Automatic water drainage bowl available on request.

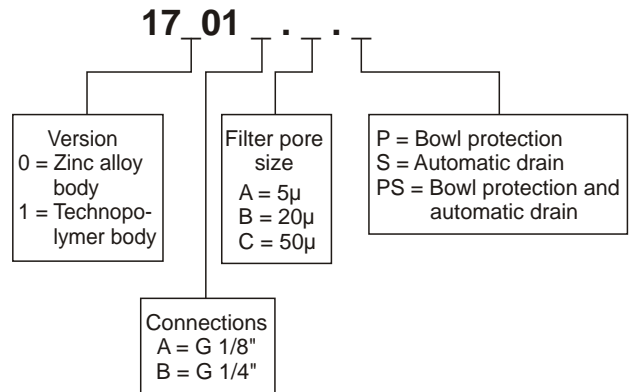
### Technical characteristics

Connections	G 1/8" - G 1/4"
Max. Inlet pressure	13 bar - 1,3 MPa
Max. ambient temperature(at 10 bar)	50°C
Weight with technopolymer body	gr. 103
Weight with zinc alloy body	gr. 218
Filter pore size	5µ
	20µ
	50µ
Bowl capacity	17 cm <sup>3</sup>
Assembly position	Vertical
Wall fixing screw	M4
Max. fitting torque on zinc alloy body	30 Nm
Max. fitting torque on technopolymer body	15 Nm

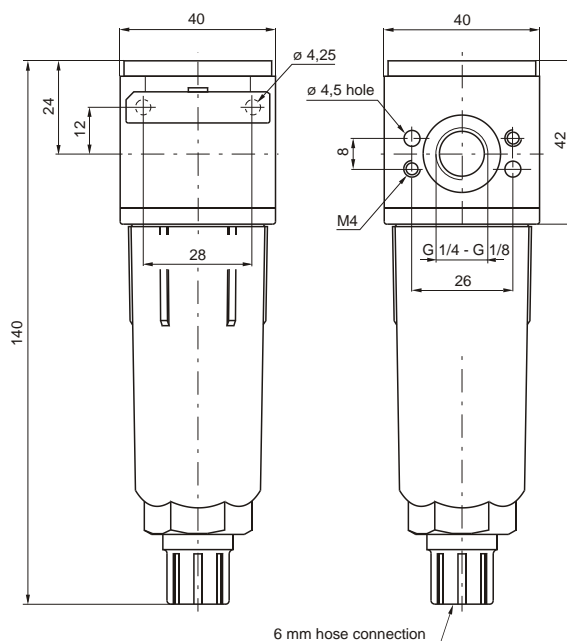
Flow rate curves  
Inlet pressure (bar)



### Ordering code



Example: **17101A.B.P**  
Filter size 1 with G 1/8" connections, filter pore size 20µ and bowl protection with technopolymer body.



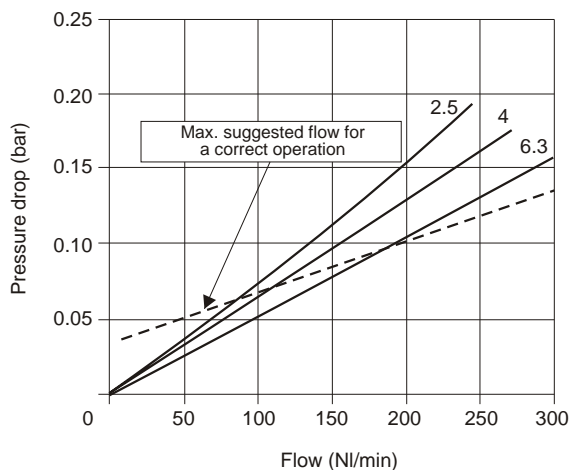
### Construction and working characteristics

- Coalescing filter element remove 0,1 $\mu$  particle equivalent to 99,97%.
- Zinc alloy body or reinforced technopolymer body with threaded brass insert connections.
- Wall mounting possibility with M4 screws protected by covers.
- Transparent technopolymer bowl screwed to the body.
- Shock resistant bowl technopolymer protection.
- Manual and semi-automatic water drain valve; in the semi-automatic version the drainage happens when there is no pressure or by pushing the valve up-wards.
- Possibility to see the water level on 360° also with bowl protection assembled.
- Automatic water drainage bowl available on request.

### Technical characteristics

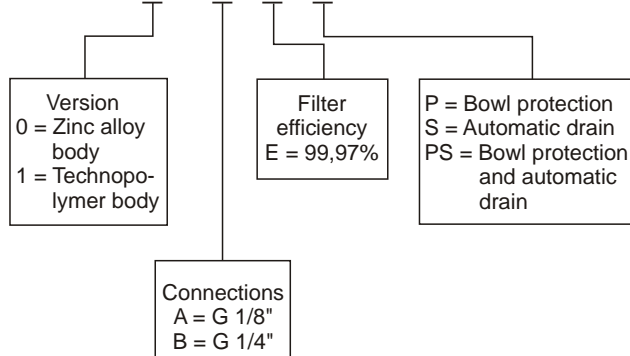
Connections	G 1/8" - G 1/4"
Max. inlet pressure	13 bar - 1,3 MPa
Max. ambient temperature (at 10 bar)	50°C
Weight with technopolymer body	gr. 110
Weight with zinc alloy body	gr. 225
Filter efficiency with 0,1 $\mu$ particle	99,97%
Bowl capacity	17 cm <sup>3</sup>
Assembly position	Vertical
Wall fixing screws	M4
Max. fitting torque on zinc alloy body	30 Nm
Max. fitting torque on technopolymer body	15 Nm

Flow rate curves  
Inlet pressure (bar)



### Ordering code

17 08 . . .



Example: **17108A.E.P**  
Filter size 1 with G 1/8" connections. Filter efficiency 99,97% and bowl protection with technopolymer body.