

## Ti20 Thermal Imager

**The thermal imager for everyday maintenance and inspection**

The Ti20 brings the power diagnostic capabilities of infrared thermal imaging technology within reach of a wider range of industrial applications. The unit is fully radiometric for detailed temperature analysis and tracking of critical components.

### High performance, designed for industrial use

- 128 x 96 detector provides a clear thermal image with accurate temperature measurements up to 350°C
- Fully radiometric for detailed temperature analysis and tracking of critical components
- Protected against dust and moisture (IP54 rated) to withstand harsh industrial environments
- Provides 3 hours continuous operation per battery charge (2 battery packs delivered with the unit)

### Easy to use

- Large color LCD displays uncluttered image with data and routing instructions
- Facilitates one-handed point-, shoot- and image capture operation
- Assists fast inspections with clear on-screen step-by-step routing instructions

### Complete solution offering lowest cost of ownership

- Includes InsideIR™ software for unlimited use by every member of the maintenance team (no software license fees)
- Comes complete with all necessary accessories and professional application training material to ensure a fast return on investment

### Typical applications

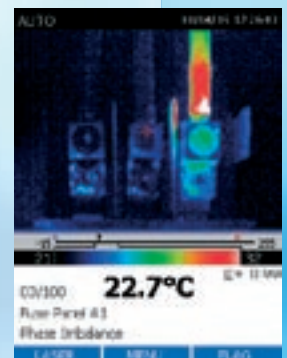
Industrial maintenance – Check whether repairs have been performed successfully.

Predictive maintenance – Identify electrical and mechanical problems before they cause failure.

Process monitoring – Real-time observation to ensure efficient and safe operation.



Cooling pump running at operating temperature.



Temperature difference between phases indicates an unbalanced load.

## Specifications

		Fluke Ti20
Imaging performance	Field of view (FOV)	20° horizontal x 15° vertical
	Spatial resolution (IFOV)	2.73 mrad
	Min focus distance	0.15 m
	Thermal sensitivity (NETD)	≤0.2°C at 30°C
	Image frequency	9 Hz
	Focus	Manual
	Detector type	128 x 96 Focal Plane Array, Uncooled Microbolometer
Temperature measurement	Spectral band	7.5 µm to 14 µm
	Calibrated temperature range	-10°C to 350°C
	Accuracy	±2°C or 2% (whichever is greater)
	Measurement modes	Auto and manual level and span adjustment
Image presentation	Emissivity correction	0.1 to 1.0 (0.01 increments)
	Digital display	3" large color LCD
	LCD backlight	Selectable On/Off
Image and data storage	Palettes	Grayscale, reverse grayscale, rainbow, ironbow
	Storage medium	50 images internal flash
Interfaces and software	File formats supported	14 bit measurement data included. Exportable JPEG, BMP, GIF, PNG, TIFF, WMF, EXIF, EMP
	Interface	USB 2.0 (High speed)
Laser	Software	InsideIR; Full analysis and reporting software included
	Classification	Class II
Controls and adjustments	Set-up controls	Date/time, temperature units C/F, LCD intensity (high/normal/low),
	On-screen Indicators	Battery status, real time clock and center point temperature, range and span indication and high and low alarm settings
Power	Battery type	Rechargeable battery pack
	Battery operating time	3 hours continuous operation
	AC Operation	AC adapter 110/220 VAC, 50/60 Hz
	Power saving	Automatic shutdown and sleep modes (user specified)
Environmental and mechanical design	Operating temperature	0 to +50°C
	Storage temperature	-25 to +70°C
	Relative humidity	Operating and storage 10% to 95%, non-condensing
	Water and dust resistant	IP54
	Weight (including batteries)	1.2 kg
Other	Camera size (HxWxD)	254 x 102 x 178 mm
	Warranty	1 year

**Fluke.** *Keeping your world up and running.™*



### Included accessories

- Hard carrying case
- 2 Rechargeable Battery Packs
- Soft-sided carrying case
- Rechargeable battery pack
- AC/DC power adapter
- USB communication cable
- InsideIR reporting and analysis software
- Interactive CD with training materials
- Getting Started Guide

### Ordering information

Ti20 Thermal Imager

### Fluke Corporation

P.O. Box 9090  
Everett, WA USA 98206

### Fluke Europe B.V.

P.O. Box 1186  
5602 BD Eindhoven  
The Netherlands

### For more information call:

In the U.S.A. (800) 443-5853  
or Fax (425) 446-5116  
In Europe/M-East/Africa +31 (0)40 2 675 200  
or Fax +31 (0)40 2 675 222  
In Canada (905) 890-7600  
or Fax (905) 890-6866  
From other countries +1 (425) 446-5500  
or Fax +1 (425) 446-5116

Visit us on the worldwide web at:

**<http://www.fluke.com>**

### Fluke (UK) Ltd.

52 Hurricane Way  
Norwich  
Norfolk  
NR6 6JB  
United Kingdom  
Tel.: (020) 7942 0700  
Fax: (020) 7942 0701  
E-mail: [industrial@uk.fluke.nl](mailto:industrial@uk.fluke.nl)

Visit us on the worldwide web at:

**<http://www.fluke.co.uk>**