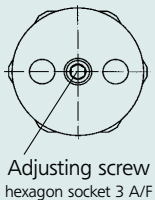
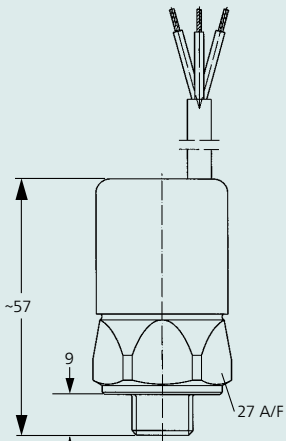
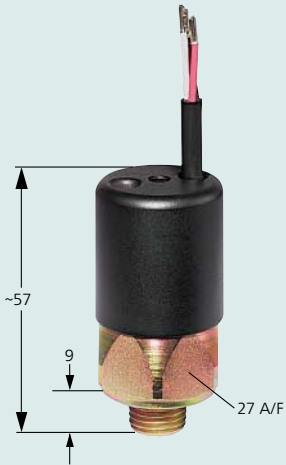


# 0240 / 0241

## Diaphragm/piston pressure switches

Depending on connection, suitable for 42 V or 250 V  
 With changeover switch and silver contacts  
 Overpressure safe to 300 / 600 bar<sup>2)</sup>



### 0240 Diaphragm pressure switches

Adjustment range in bar	Tolerance in bar (RT)	Thread	Order number	p <sub>max.</sub> in bar
0.3 - 1.5	± 0.2	G 1/4"	0240 457 03 XXX <sup>1)</sup>	300 <sup>2)</sup>
		NPT 1/8"	0240 457 04 XXX <sup>1)</sup>	
		NPT 1/4"	0240 457 09 XXX <sup>1)</sup>	
		7/16-20 UNF	0240 457 20 XXX <sup>1)</sup>	
		9/16-18 UNF	0240 457 21 XXX <sup>1)</sup>	
1 - 10	± 0.5 - 1.0	G 1/4"	0240 458 03 XXX <sup>1)</sup>	
		NPT 1/8"	0240 458 04 XXX <sup>1)</sup>	
		NPT 1/4"	0240 458 09 XXX <sup>1)</sup>	
		7/16-20 UNF	0240 458 20 XXX <sup>1)</sup>	
		9/16-18 UNF	0240 458 21 XXX <sup>1)</sup>	
10 - 20	± 1.0	G 1/4"	0240 459 03 XXX <sup>1)</sup>	
		NPT 1/8"	0240 459 04 XXX <sup>1)</sup>	
		NPT 1/4"	0240 459 09 XXX <sup>1)</sup>	
		7/16-20 UNF	0240 459 20 XXX <sup>1)</sup>	
		9/16-18 UNF	0240 459 21 XXX <sup>1)</sup>	
20 - 50	± 2.0	G 1/4"	0240 461 03 XXX <sup>1)</sup>	
		NPT 1/8"	0240 461 04 XXX <sup>1)</sup>	
		NPT 1/4"	0240 461 09 XXX <sup>1)</sup>	
		7/16-20 UNF	0240 461 20 XXX <sup>1)</sup>	
		9/16-18 UNF	0240 461 21 XXX <sup>1)</sup>	

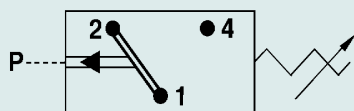
### 0241 Piston pressure switches

Adjustment range in bar	Tolerance in bar (RT)	Thread	Order number	p <sub>max.</sub> in bar
50 - 150	± 5.0	G 1/4"	0241 460 03 XXX <sup>1)</sup>	600 <sup>2)</sup>
		NPT 1/8"	0241 460 04 XXX <sup>1)</sup>	
		NPT 1/4"	0241 460 09 XXX <sup>1)</sup>	
		7/16-20 UNF	0241 460 20 XXX <sup>1)</sup>	
		9/16-18 UNF	0241 460 21 XXX <sup>1)</sup>	

**!** Order number **024X XXX XX X XXX<sup>1)</sup>**  
**■** Add figure for diaphragm/seal material

<b>NBR</b>	Hydraulic / machine oil, turpentine, heating oil, air etc.	=	<b>1</b>
<b>EPDM</b>	Hydrogen, acetylene, ozone, brake fluid etc.	=	<b>2</b>
<b>FKM</b>	Hydraulic fluids (HFA, HFB, HFC, HFD), petrol/gasoline etc.	=	<b>3</b>
Temperaturbereiche der Membrantypen siehe Seite 21			

- Options:
  - free cable end
  - customer-specific connector system
  - fixed, pre-set switching point
- Other body materials and connection threads on request.



<sup>1)</sup> A complete, customer-specific order number will be issued by SUCO when an order is placed.

<sup>2)</sup> Static pressure, dynamic pressures should be 30 to 50 % lower. These values refer to the hydraulic or pneumatic part of the pressure switch.

Piston-type pressure switches are only to a limited extent suitable for use with gases and oxygen. See explanation on page 5.

#### Warning!

When using with oxygen, the relevant accident-prevention regulations must be observed. In addition, we recommend that a maximum operating pressure of 10 bar is not exceeded.

#### Degree of protection IP 67

The type approval does not apply without restriction to all environmental conditions. It is the responsibility of the user to check whether the connection complies with regulations other than those stated, and whether it can be used for special applications which could not be foreseen by us in advance.

## 0240/0241 continued

- Switching point can be adjusted after potting
- Degree of protection **IP 67**

### 0240 / 0241

### Technical Data

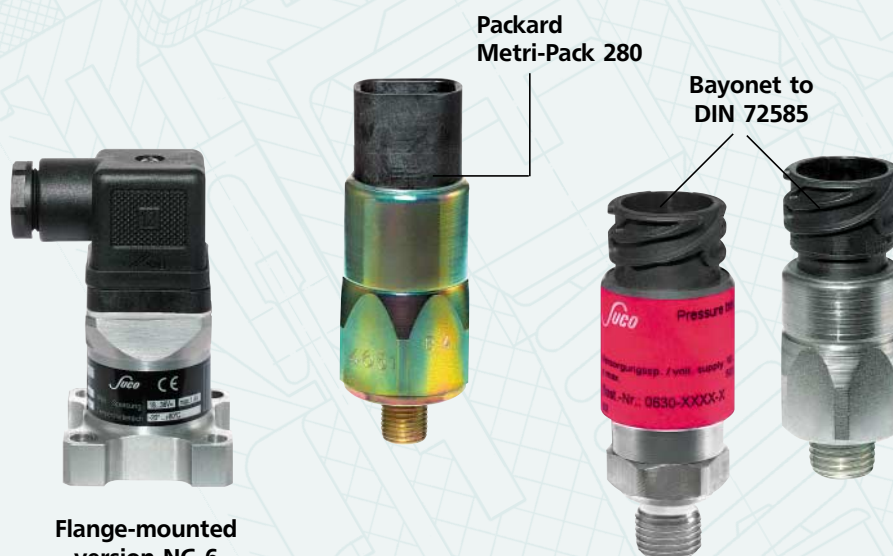
Voltage:	42 V / 250 V depending on connection
Current:	max. 2 A
Degree of protection:	IP 67
Protection class:	2, protective insulation
Switching frequency:	200 / min.
Hysteresis:	10 - 20% not adjustable
Mechanical life expectancy:	10 <sup>6</sup> cycles (at pressures up to 50 bar)
Materials:	body: zinc-plated steel protective cover: anodised aluminium

## Special versions based on other pressure switch ranges

SUCO has more than 50 years experience in the field of pressure monitoring. In the course of this time, we have developed many customer-specific solutions.

The examples below show integrated connectors and a flange-mounted pressure switch; they document the innovative capacity and flexibility of our technology.

For adequate production quantities to justify the investment in special tooling, we will be pleased to produce a special version for your specific task in proven SUCO quality.



**Examples,  
Possibilities,  
Variants ...**