



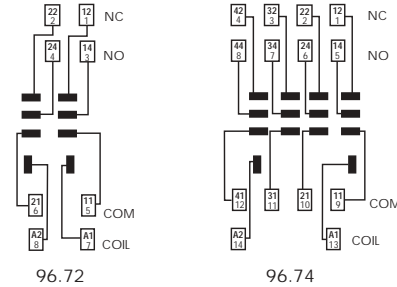
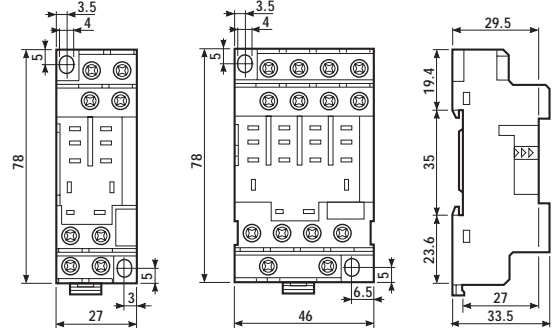
Relay type	56.32		56.34	
Colour	BLUE	BLACK	BLUE	BLACK
Screw terminal socket: panel or 35 mm rail (EN 50022) mount retaining clip 094.71/096.71 supplied with socket packaging code SMA	96.72	96.72.0	96.74	96.74.0
Retaining clip	094.71		096.71	
Modules (see table below)	99.01			

Approvals
(according to type):



- RATED VALUES: 12 A - 250 V
- DIELECTRIC STRENGTH: ≥ 2 kV AC
- PROTECTION CATEGORY: IP 20
- AMBIENT TEMPERATURE: (-40...+70)°C
- \oplus SCREW TORQUE: 0.8 Nm
- WIRE STRIP LENGTH: 10 mm
- MAX WIRE SIZE:

	solid wire	stranded wire
mm ²	1x4 / 2x4	1x4 / 2x2.5
AWG	1x12 / 2x12	1x12 / 2x14



99.01 modules for 96.72 and 96.74 socket		BLUE
Diode** (+A1)	(6...220) V DC	99.01.3.000.00
Diode (inverted polarity)	(6...220) V DC	99.01.2.000.00
LED	(6...24) V DC/AC	99.01.0.024.59
LED	(28...60) V DC/AC	99.01.0.060.59
LED	(110...240) V DC/AC	99.01.0.230.59
LED + Diode** (+A1)	(6...24) V DC	99.01.9.024.99
LED + Diode** (+A1)	(28...60) V DC	99.01.9.060.99
LED + Diode** (+A1)	(110...220) V DC	99.01.9.220.99
LED + Diode (inverted polarity)	(6...24) V DC	99.01.9.024.79
LED + Diode (inverted polarity)	(28...60) V DC	99.01.9.060.79
LED + Diode (inverted polarity)	(110...220) V DC	99.01.9.220.79
LED + Varistor	(6...24) V DC/AC	99.01.0.024.98
LED + Varistor	(28...60) V DC/AC	99.01.0.060.98
LED + Varistor	(110...240) V DC/AC	99.01.0.230.98
RC circuit	(6...24) V DC/AC	99.01.0.024.09
RC circuit	(28...60) V DC/AC	99.01.0.060.09
RC circuit	(110...240) V DC/AC	99.01.0.230.09
No - remanence (62 k Ω /1W)	(110...240) V AC	99.01.8.230.07

**For DC supply, apply the positive to terminal A1. Modules in Black housing are available on request. Green LED is standard. Red LED available on request.



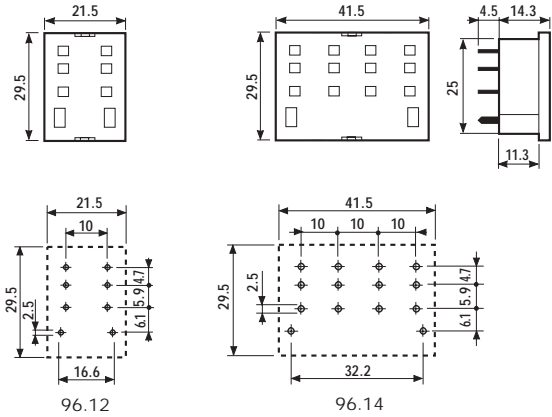
96.12

Relay type	56.32		56.34	
Colour	BLUE	BLACK	BLUE	BLACK
P.C.B. socket	96.12	96.12.0	96.14	96.14.0
retaining clip 094.51 supplied with socket packaging code SMA				
Retaining clip	094.51			

Approvals
(according to type):



- RATED VALUES: 12 A - 250 V (10 A max for each contact circuit)
- DIELECTRIC STRENGTH: ≥ 2 kV AC
- AMBIENT TEMPERATURE: (-40...+70)°C



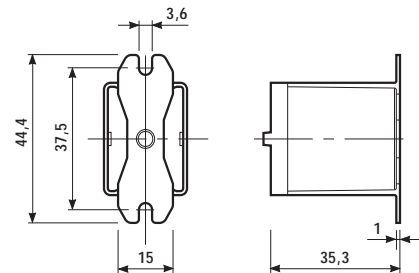
Copper side view

ACCESSORIES



056.05

Adaptor with top mount flange (for 56.32.x.xxx.xx00)	056.05
---	--------



PACKAGING CODES

How to code and identify retaining clip and packaging options for sockets.

Code options according to the last three letters:



- A** Standard packaging
- SM** Metal retaining clip
- SX** No retaining clip