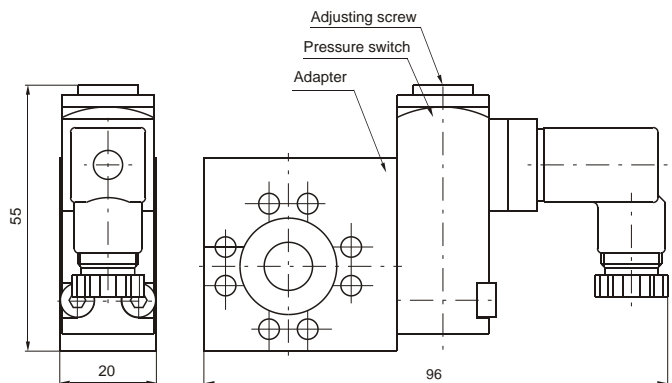


Pressure Switch complete with adapter



Construction and working characteristics

The pressure switch complete with adapter has to be assembled between two elements of the FRL group. It cannot be utilized separately or at the end of the FRL group.

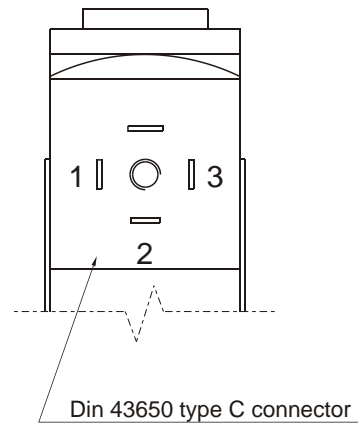
The pressure switch can be set at desired pressure (pressure range from 2 to 10 bar) by rotating the adjusting screw.

The electrical connection is made by mean of a 15 mm connector DIN 43650 type C.

The microswitch contact could be normally closed or open (change over switch).

Connection

- 1 = Neutral
- 2 = N.C. contact
- 3 = N.O. contact



Technical characteristics

Max. inlet pressure	13 bar 1.3 MPa
Max. temperature	50°C
Weight	gr. 160
Microswitch capacity	5A
Grade of protection (with connector assembled)	IP 65
Adjusting range	2 - 10 bar
Assembly position	Any

Ordering code

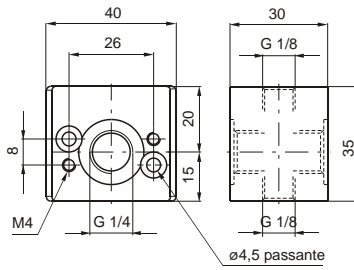
17

- 14A = Pressure switch adapter
- 14B = Pressure switch
- 14C = Pressure switch complete with adapter

Example: **1714C**
Pressure switch complete with adapter.



Air Intake

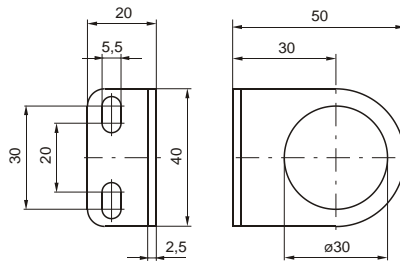


Weight 75 gr.

Ordering code

17140

Fixing bracket

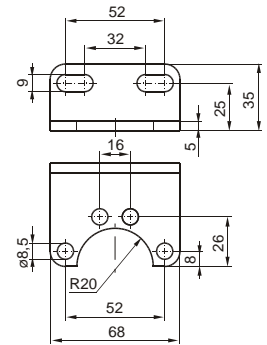


Weight 22 gr.

Codice di ordinazione

17150

Fixing bracket

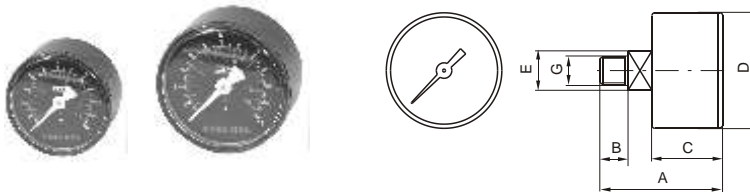


Weight 20 gr.

Ordering code

170M5

Pressure gauge



Ordering code

Codici di ordinazione

17070

DIMENSIONS							
CODE	A	B	C	D	E	G	Weight gr.
17070A	44	10	26	41	14	G1/8"	60
17070B	45	10	27	49	14	G1/8"	80

A = Dial ø40
B = Dial ø50
A = Scale 0-4 bar
B = Scale 0-6 bar
C = Scale 0-12 bar

Assembling kit



Ordering code

17160
(standard)

Weight 15 gr.

17165
(for progressive start-up valve)

Assembling kit for manifold regulators



Weight 20 gr.

Ordering code

170M6