

Construction and working characteristics

- 3 way valve with double poppet.
- Possibility to adjust the down stream circuit filling time by the enclosed adjustable metering screw.
- Quick down stream circuit discharge.
- Possibility for a pneumatic or electric piloting control.
- Body made with anodized 2011 aluminum alloy.
- Wall mounting possibility with M4 screws.

Important note: the preventive or programmed maintenance of this product is not foreseen considering the elaborated assembling and the specific "PNEUMAX" testing; therefore, call the producer or its representative in case of necessity.

Technical characteristics

Connections	G 1/4"
Max. inlet pressure	10 bar - 1 MPa
Max. ambient temperature	50°C
Weight	gr. 365
Assembly position	Any
Min. operating pressure	2.5 bar - 0.25 Mpa
Nominal flow at 6 bar with $D_p=1$	1000 NI/min.
Flow with adjustable metering screw fully open	150 NI/min
Wall mounting screws	M4

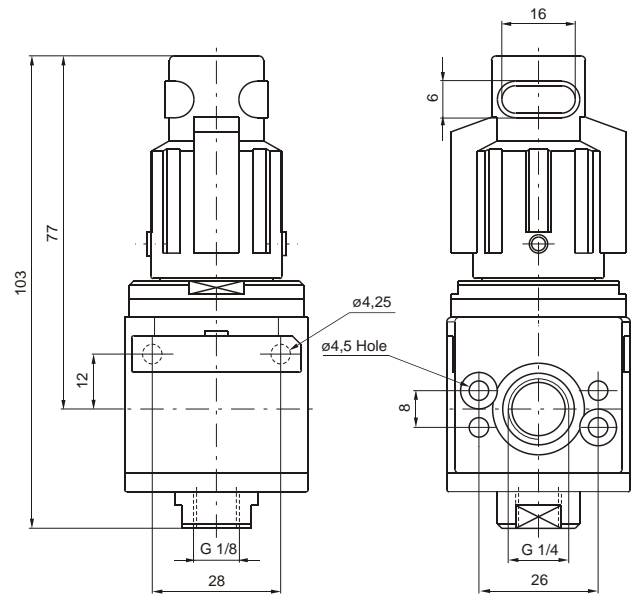
Ordering code

17110.M2

Electrically controlled progressive start-up valve size 1, complete with mechanic for M2 microsolenoid valve.

17120

Progressive start-up valve size 1 with pneumatic control.



Construction and working characteristics

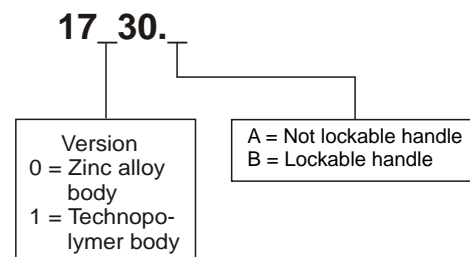
- 3 ways poppet valve.
- Zinc alloy body or reinforced technopolymer body with threaded brass insert connections.
- Double handle action for valve opening: pushing and rotating (clockwise).
- Simply rotate the valve handle counter clockwise for valve closing and down stream circuit discharging.
- Possibility to lock the valve in the discharging position by fitting in a padlock in the proper seat.
- Technopolymer body with metal reinforced threaded connections.

Technical characteristics

Connections	G 1/4"
Max. inlet pressure	13 bar - 1,3 MPa
Max. ambient temperature	50°C
Weight with technopolymer body	gr. 155
Weight with zinc alloy body	gr. 280
Assembly position	Any
Nominal flow at 6 bar with $D_p=1$	1000 NI/min
Wall mounting screws	M4
Handle opening and closing angle	90°
Max. fitting torque on zinc alloy body	30 Nm
Max. fitting torque on technopolymer body	15 Nm

Important note: the preventive or programmed maintenance of this product is not foreseen considering the elaborated assembling and the specific "PNEUMAX" testing; therefore, call the producer or its representative in case of necessity.

Ordering code



Example: **17130.B**
Shut-off valve size 1 complete with lockable handle with technopolymer body.