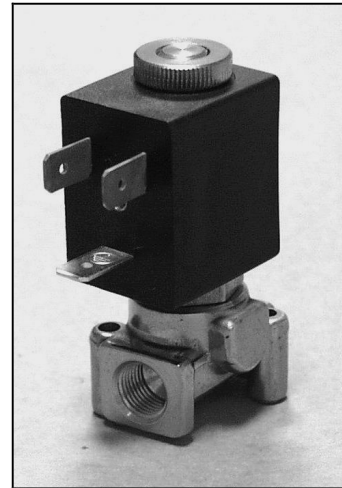


## DESCRIPTION

Solenoid valve 2 way direct acting poppet type. Bi-stable impulse drive. The bi-stable function is achieved by the use of a polarised permanent magnet energising the coil with a DC current for at least 15 ms in the reverse direction of the preceding impulse.



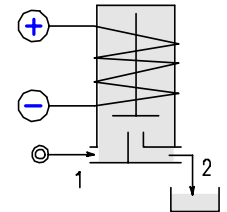
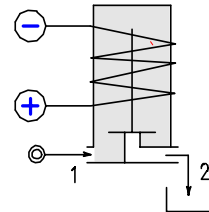
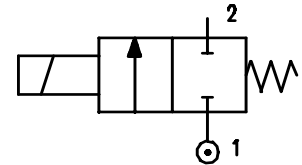
2

## CONSTRUCTION

Body	Brass
Armature tube	Brass
Armature & core	Stainless steel
Magnet	SmCo5
Spring	Stainless steel
Seal material	NBR FPM EPDM

## FEATURES

Maximum allowable pressure 50 bar  
 Maximum fluid viscosity 25cSt (mm<sup>2</sup>/s)  
 Ambient temperature: with class F coil -10° +55°C  
 with class H coil -10°+80°C  
 Universal mounting position



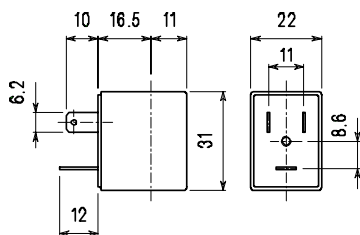
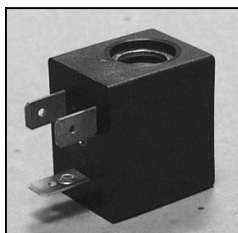
**OPTIONS:** Armature tube stainless steel  
 Electroless nickel plating  
 Explosion proof coil to ATEX - EExmII Type 7  
 Special power

CODE ① ②	Connection G	Orifice mm	KV m <sup>3</sup> /h	Differential Pressure bar		Nominal Power DC Watt	Coil		Seal ①	Temp. Range °C
				Min	Max		Type	Width		
D115A.....12///.....	1/8"	1.2	0.04	0	12	2	3	22	NBR=B	-10 +90
D115A.....15///.....	1/8"	1.5	0.06	0	8	2	3	22		
D115A.....20///.....	1/8"	1.5	0.06	0	20	5	3	22	EPDM=E	<+140
	1/8"	2	0.09	0	3	2	3	22		
D115A.....25///.....	1/8"	2	0.09	0	12	5	3	22		
	1/8"	2.5	0.14	0	1	2	3	22		
	1/8"	2.5	0.14	0	5	5	3	22		
D115A.....31///.....	1/8"	2.5	0.14	0	8	6.5	3	22	FPM=V	-10 +130
	1/8"	3.1	0.19	0	2	5	3	22		
	1/8"	3.1	0.19	0	3.5	6.5	3	22		

- ① Seal
- ② Coil

Example D115AE20///300120 EPDM Seal  
 Coil 12V DC 2 watt

COIL	DIRECT CURRENT															Electrical connection	Connector
	3V			6V			9V			12V			24V				
	2W	5W	6.5W	2W	5W	6.5W	2W	5W	6.5W	2W	5W	6.5W	2W	5W	6.5W		
Type 3 Width 22 Code ②	308120			305120	305150		307120	307150		300120	300150	300	301120	301150	301	DIN 46244	PG9 code 10348000



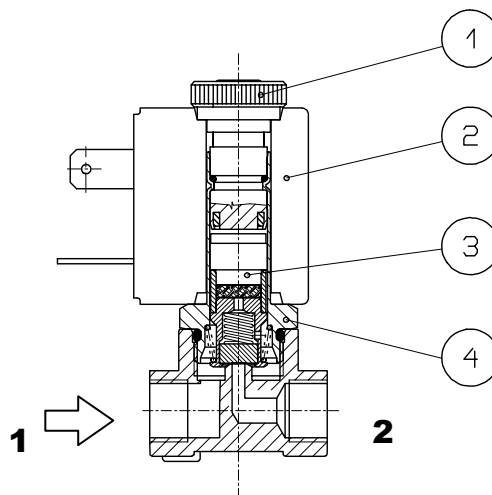
**DESCRIPTION**  
 Class F insulation  
 Voltage tolerance  $\pm 10\%$   
 Protection to IP65  
 with connector fitted  
 IP00 without connector

**OPTIONS**  
 Class H insulation  
 Special voltage & coil powers

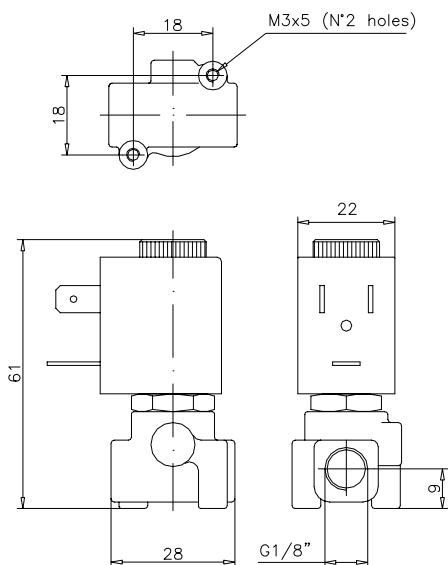
Type 3 Weight 0.05Kg

**SPARE PARTS LIST**

- 1.Coil fixing nut
- 2.Coil
- 3.Armature assembly
- 4.Armature tube with core



**OVERALL DIMENSION**



Weight 0.14 Kg